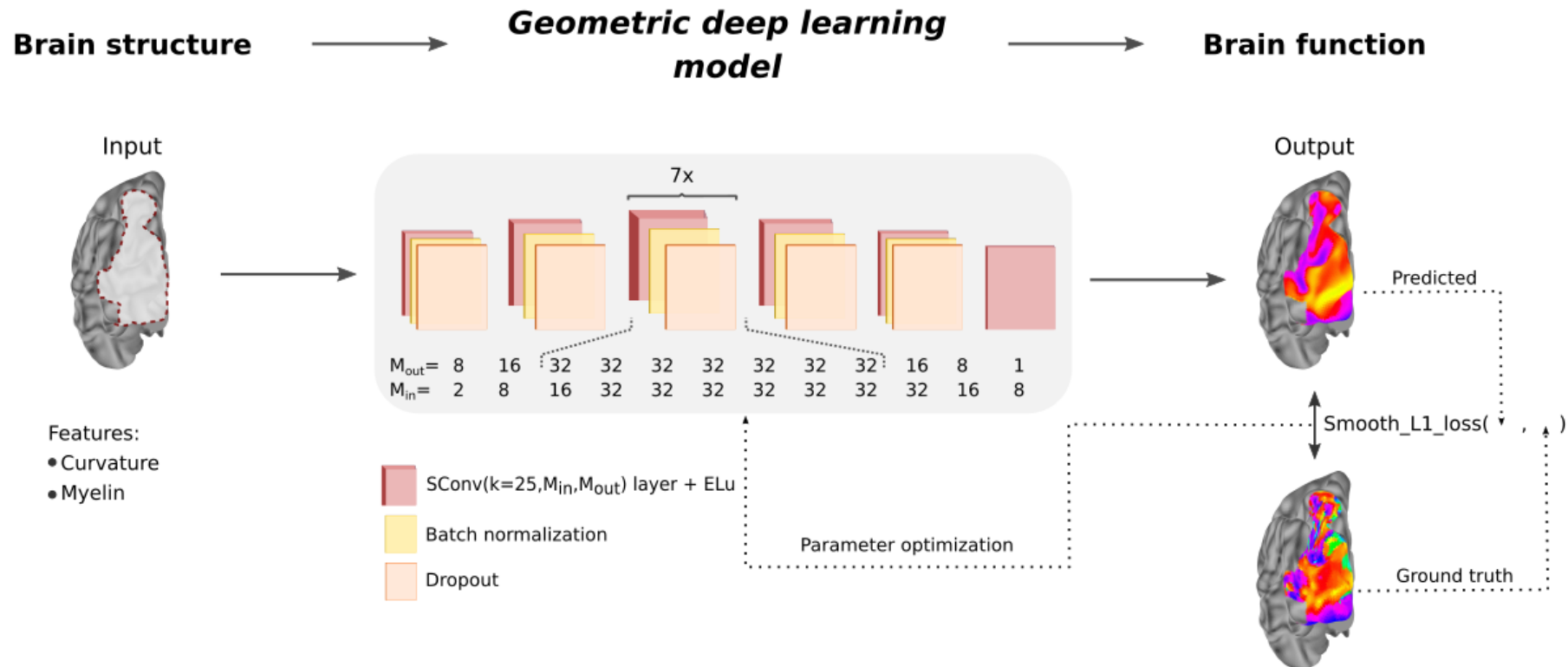
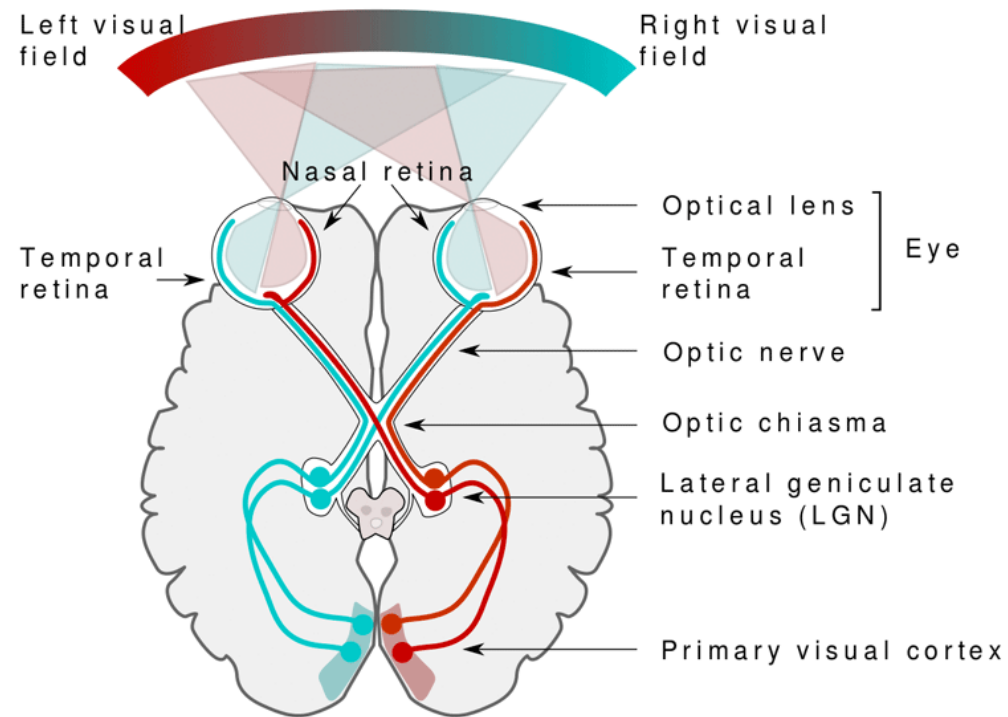


DeepRetinotopy: Predicting the functional organization of human visual cortex from structural MRI data using geometric deep learning

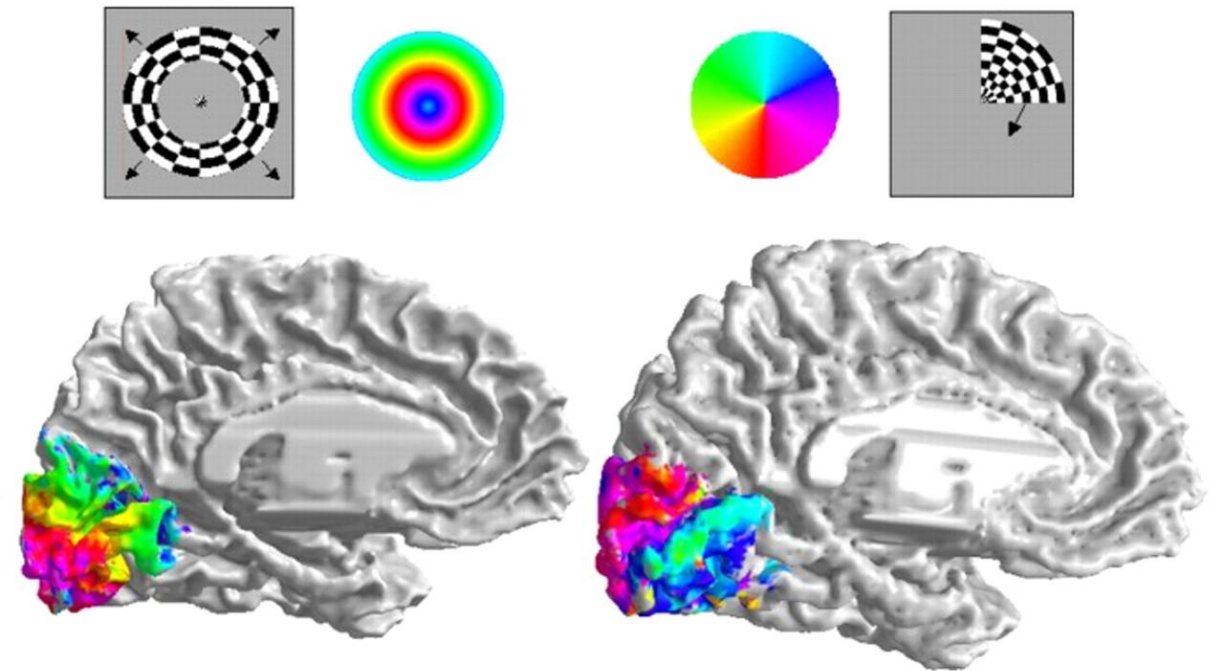
Fernanda L. Ribeiro, Steffen Bollmann, Alexander M. Puckett



Retinotopic organization of the visual cortex

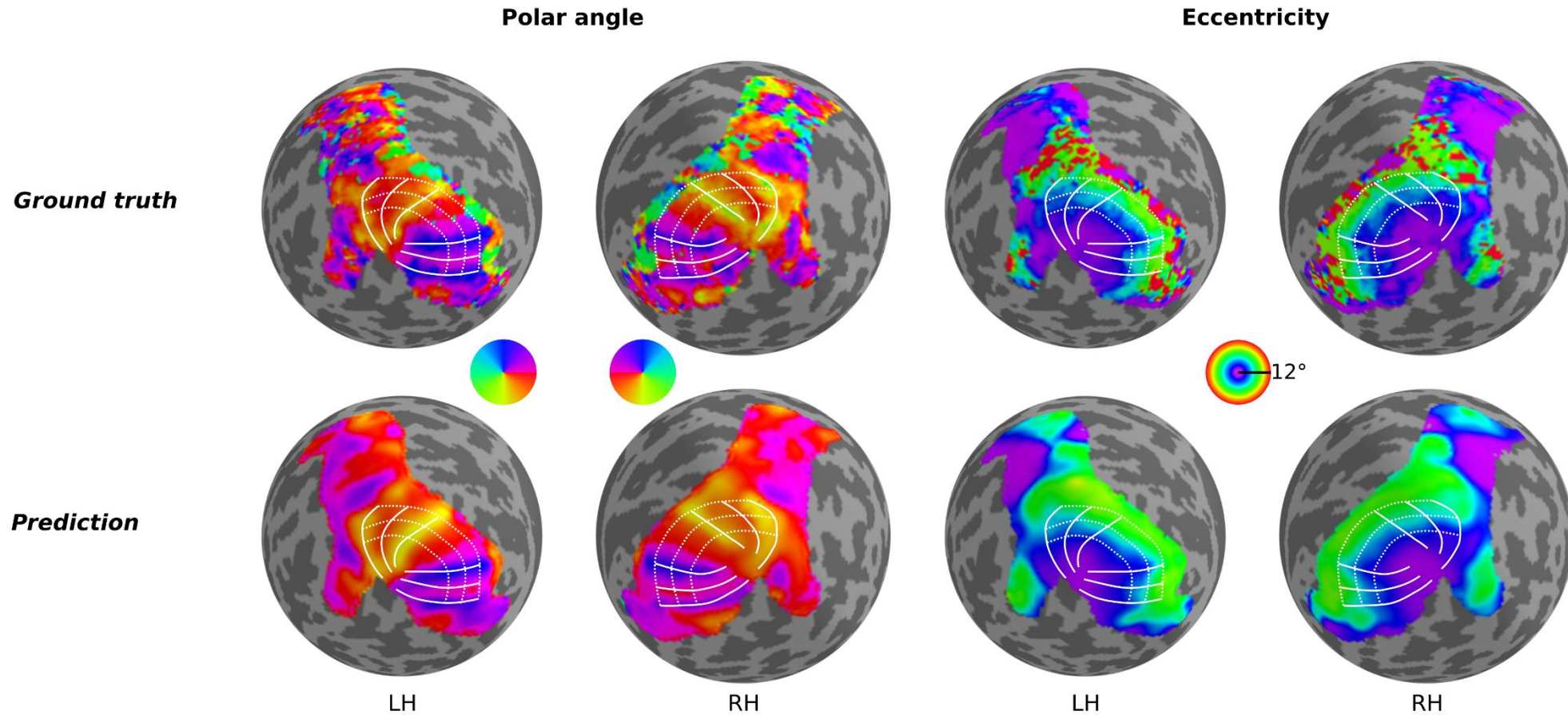


<http://mriquestions.com/visual.html>

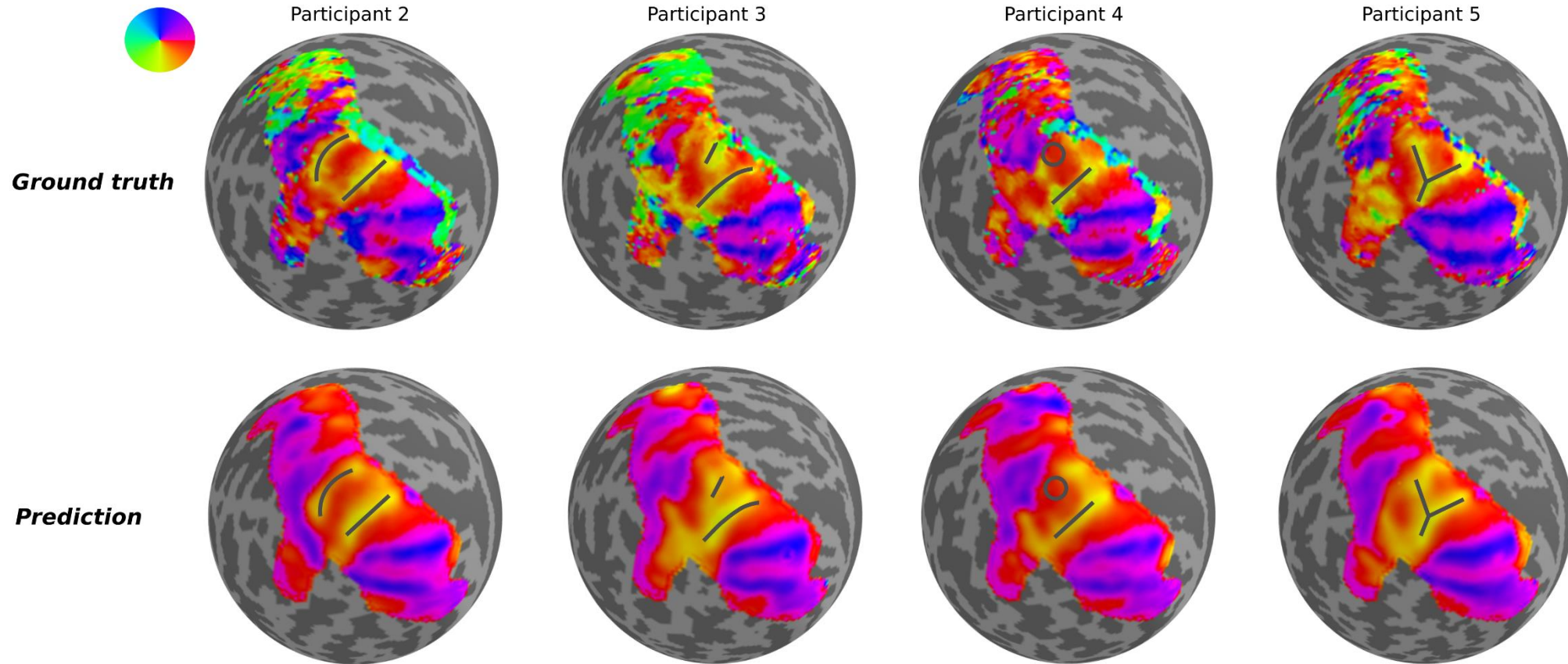


Dougherty et al., 2003

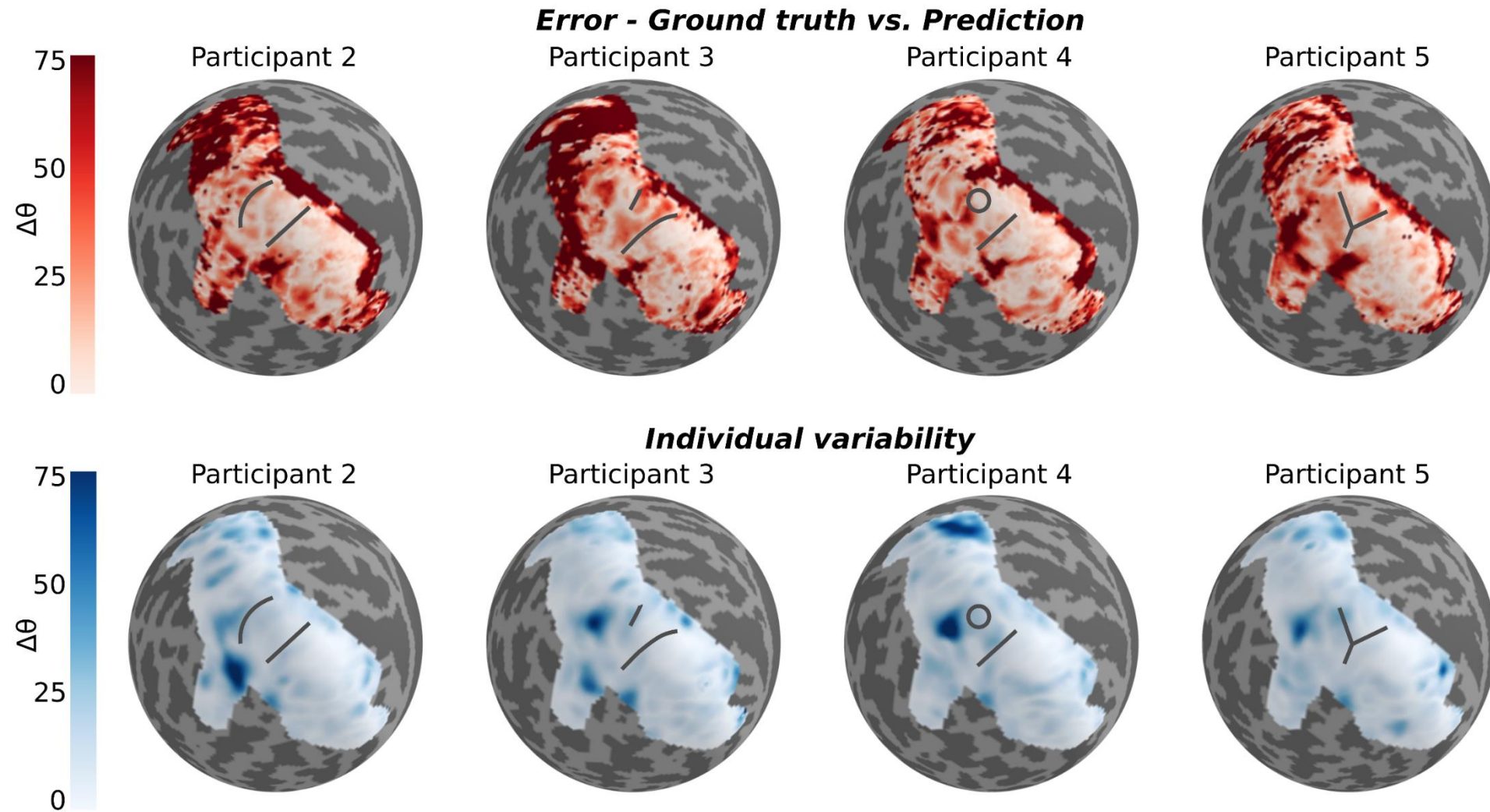
Retinotopic mapping with geometric deep learning



Individual differences in retinotopic maps



Error and individual variability in retinotopic maps



Questions/comments?



Check out our complete manuscript on bioRxiv:

<https://www.biorxiv.org/content/10.1101/2020.02.11.934471v2>

fernanda.ribeiro@uq.edu.au



@NandaRibeiro93



@sbollmann_MRI



@pucketta_a